



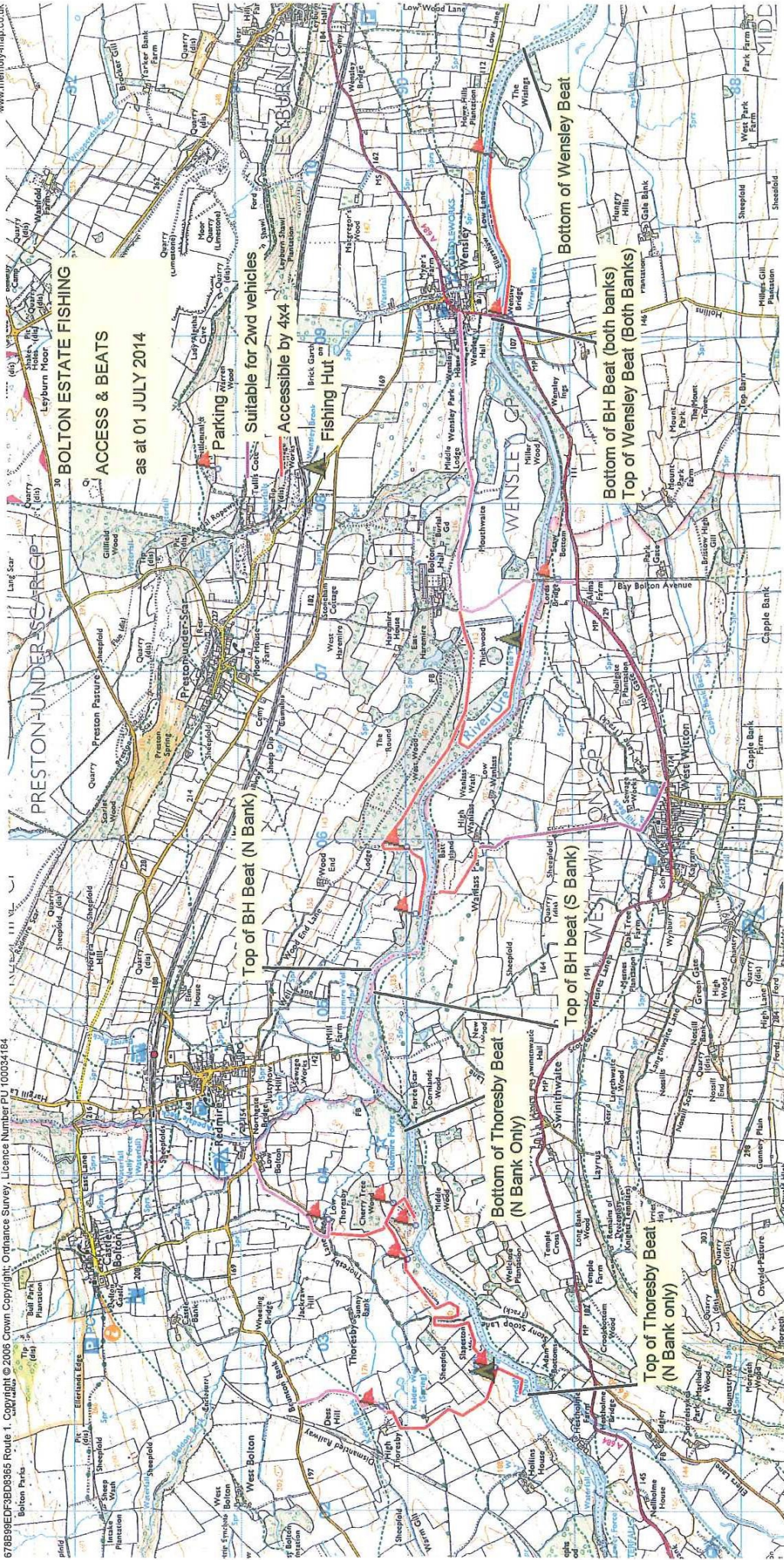
BOLTON ESTATE

FISHING INFORMATION & WELCOME PACK



Bolton Hall and Thoresby Beat Map

The Estate Office, Bolton Hall, Leyburn, North Yorkshire, DL8 4UF
T: 01969 622303 | E: office@boltonestate.co.uk W: www.boltonestate.co.uk/fishing



Bolton Estate Fishings, Access and Boundaries

If accessing Thoresby beat through Low Thoresby Farm PLEASE remember to text the farmer, Richard Weatherald on 07970 524487, stating fishing, vehicle reg and expected time of departure.

If travelling by 2 wd and parking at Low Thoresby, please call same number to confirm that vehicle will be safe by silage clamp.

On all beats please avoid using the 4x4 tracks in extremely wet conditions, if you think it will cause lasting ground damage.

BOLTON ESTATE FISHING ACCESS & BEATS
as at 01 JULY 2014

Suitable for 2wd vehicles
Accessible by 4x4

Fishing Hut

Bottom of Thoresby Beat (N Bank Only)

Top of Thoresby Beat (N Bank only)

Bottom of Wensley Beat

Top of Wensley Beat (Both Banks)

Bottom of Wensley Beat

Top of Wensley Beat (Both Banks)

Bottom of Wensley Beat

Top of Wensley Beat (Both Banks)

Bottom of Wensley Beat

Top of Wensley Beat (Both Banks)

Bottom of Wensley Beat

Top of Wensley Beat (Both Banks)

Bottom of Wensley Beat

Top of Wensley Beat (Both Banks)

Bottom of Wensley Beat

Top of Wensley Beat (Both Banks)

Bottom of Wensley Beat

Top of Wensley Beat (Both Banks)

Bottom of Wensley Beat

Top of Wensley Beat (Both Banks)

Bottom of Wensley Beat

Top of Wensley Beat (Both Banks)

Bottom of Wensley Beat

Top of Wensley Beat (Both Banks)

Bottom of Wensley Beat

Top of Wensley Beat (Both Banks)

Bottom of Wensley Beat

Top of Wensley Beat (Both Banks)

Bottom of Wensley Beat

Top of Wensley Beat (Both Banks)

Bottom of Wensley Beat

Top of Wensley Beat (Both Banks)

Bottom of Wensley Beat

Top of Wensley Beat (Both Banks)

Bottom of Wensley Beat

Top of Wensley Beat (Both Banks)

Bottom of Wensley Beat

Top of Wensley Beat (Both Banks)

Bottom of Wensley Beat

Top of Wensley Beat (Both Banks)

Bottom of Wensley Beat

Top of Wensley Beat (Both Banks)

Bottom of Wensley Beat

Top of Wensley Beat (Both Banks)

Bottom of Wensley Beat

Top of Wensley Beat (Both Banks)

Bottom of Wensley Beat

Top of Wensley Beat (Both Banks)

Bottom of Wensley Beat

Top of Wensley Beat (Both Banks)

Bottom of Wensley Beat

Top of Wensley Beat (Both Banks)

Bottom of Wensley Beat

Top of Wensley Beat (Both Banks)

Bottom of Wensley Beat

Top of Wensley Beat (Both Banks)

Bottom of Wensley Beat

Top of Wensley Beat (Both Banks)

Bottom of Wensley Beat

Top of Wensley Beat (Both Banks)

Bottom of Wensley Beat

Top of Wensley Beat (Both Banks)

Bottom of Wensley Beat

Top of Wensley Beat (Both Banks)

Bottom of Wensley Beat

Top of Wensley Beat (Both Banks)

Bottom of Wensley Beat

Top of Wensley Beat (Both Banks)

Bottom of Wensley Beat

Top of Wensley Beat (Both Banks)

Bottom of Wensley Beat

Top of Wensley Beat (Both Banks)

Bottom of Wensley Beat

Top of Wensley Beat (Both Banks)

Bottom of Wensley Beat

Top of Wensley Beat (Both Banks)

Bottom of Wensley Beat

Top of Wensley Beat (Both Banks)

Bottom of Wensley Beat

Top of Wensley Beat (Both Banks)

Bottom of Wensley Beat

Top of Wensley Beat (Both Banks)

Bottom of Wensley Beat

Top of Wensley Beat (Both Banks)

Bottom of Wensley Beat

Top of Wensley Beat (Both Banks)

Bottom of Wensley Beat

Top of Wensley Beat (Both Banks)

Bottom of Wensley Beat

Top of Wensley Beat (Both Banks)

Bottom of Wensley Beat

Top of Wensley Beat (Both Banks)

Bottom of Wensley Beat

Top of Wensley Beat (Both Banks)

Bottom of Wensley Beat

Top of Wensley Beat (Both Banks)

Bottom of Wensley Beat

Top of Wensley Beat (Both Banks)

Bottom of Wensley Beat

Top of Wensley Beat (Both Banks)

Bottom of Wensley Beat

Top of Wensley Beat (Both Banks)

Bottom of Wensley Beat

Top of Wensley Beat (Both Banks)

Bottom of Wensley Beat

Top of Wensley Beat (Both Banks)

Bottom of Wensley Beat

Top of Wensley Beat (Both Banks)

Bottom of Wensley Beat

Top of Wensley Beat (Both Banks)

Bottom of Wensley Beat

Top of Wensley Beat (Both Banks)

Bottom of Wensley Beat

Top of Wensley Beat (Both Banks)

Bottom of Wensley Beat

Top of Wensley Beat (Both Banks)

Bottom of Wensley Beat

Top of Wensley Beat (Both Banks)

Bottom of Wensley Beat

Top of Wensley Beat (Both Banks)

Bottom of Wensley Beat

Top of Wensley Beat (Both Banks)

Bottom of Wensley Beat

Top of Wensley Beat (Both Banks)

Bottom of Wensley Beat

Top of Wensley Beat (Both Banks)

Bottom of Wensley Beat

Top of Wensley Beat (Both Banks)

Bottom of Wensley Beat

Top of Wensley Beat (Both Banks)

Bottom of Wensley Beat

Top of Wensley Beat (Both Banks)

Bottom of Wensley Beat

Top of Wensley Beat (Both Banks)

Bottom of Wensley Beat

Top of Wensley Beat (Both Banks)

Bottom of Wensley Beat

Top of Wensley Beat (Both Banks)

Bottom of Wensley Beat

Top of Wensley Beat (Both Banks)

Bottom of Wensley Beat

Top of Wensley Beat (Both Banks)

Bottom of Wensley Beat

Top of Wensley Beat (Both Banks)

Bottom of Wensley Beat

Top of Wensley Beat (Both Banks)

Bottom of Wensley Beat

Top of Wensley Beat (Both Banks)

Bottom of Wensley Beat

Top of Wensley Beat (Both Banks)

Bottom of Wensley Beat

Top of Wensley Beat (Both Banks)

Bottom of Wensley Beat

Top of Wensley Beat (Both Banks)

Bottom of Wensley Beat

Top of Wensley Beat (Both Banks)

Bottom of Wensley Beat

Top of Wensley Beat (Both Banks)

Bottom of Wensley Beat

Top of Wensley Beat (Both Banks)

Bottom of Wensley Beat

Top of Wensley Beat (Both Banks)

Bottom of Wensley Beat

Top of Wensley Beat (Both Banks)

Bottom of Wensley Beat

Top of Wensley Beat (Both Banks)

Bottom of Wensley Beat

Top of Wensley Beat (Both Banks)

Bottom of Wensley Beat

Top of Wensley Beat (Both Banks)

Bottom of Wensley Beat

Top of Wensley Beat (Both Banks)

Bottom of Wensley Beat

Top of Wensley Beat (Both Banks)

Bottom of Wensley Beat

Top of Wensley Beat (Both Banks)

Bottom of Wensley Beat

Top of Wensley Beat (Both Banks)

Bottom of Wensley Beat

Top of Wensley Beat (Both Banks)

Bottom of Wensley Beat

Top of Wensley Beat (Both Banks)

Bottom of Wensley Beat

Top of Wensley Beat (Both Banks)

Bottom of Wensley Beat

Top of Wensley Beat (Both Banks)

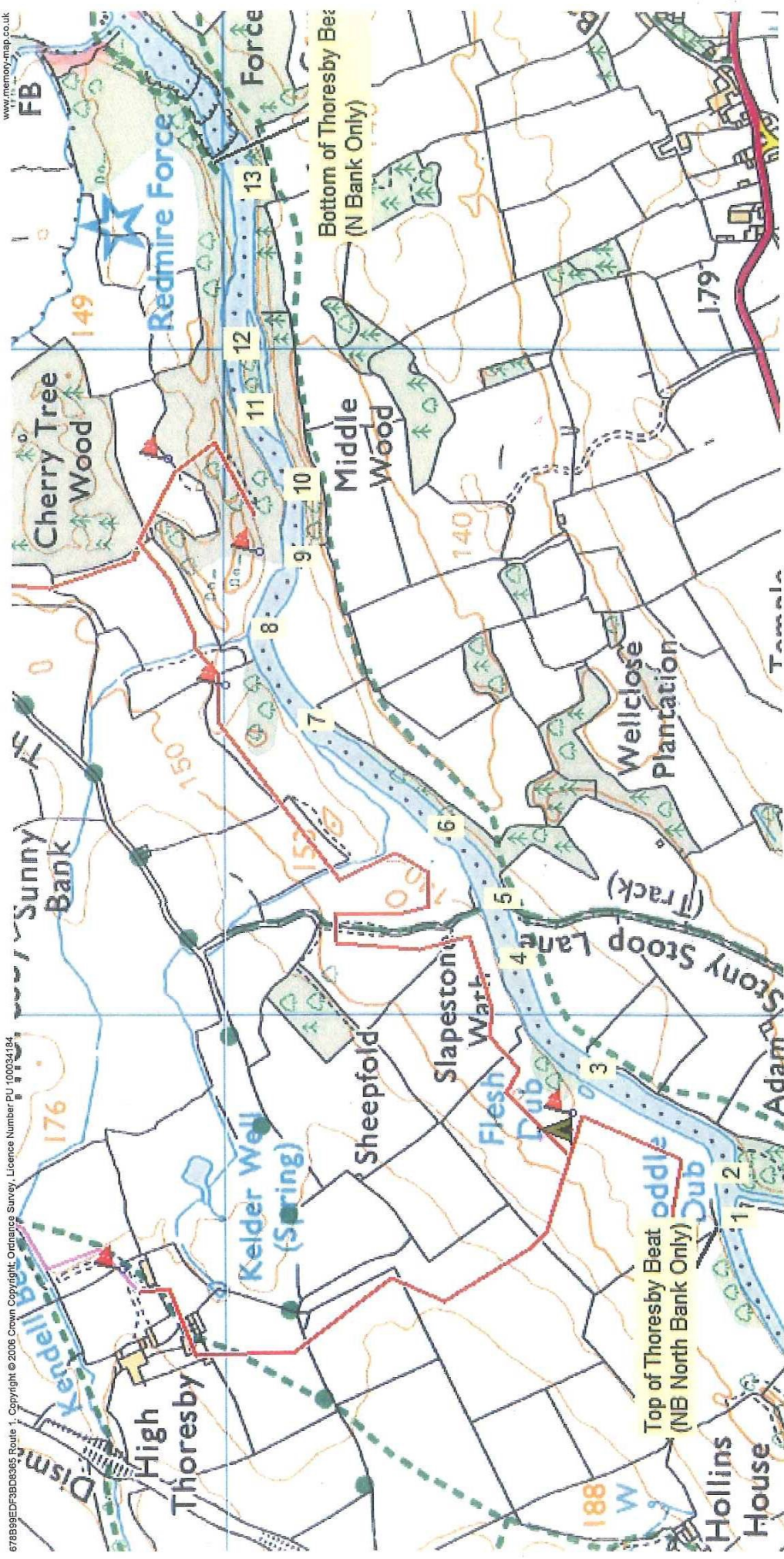
Bottom of Wensley Beat

Top of Wensley Beat (Both Banks)

Bottom of Wensley Beat

Top of Wensley Beat (Both Banks)

Bottom of Wensley Beat



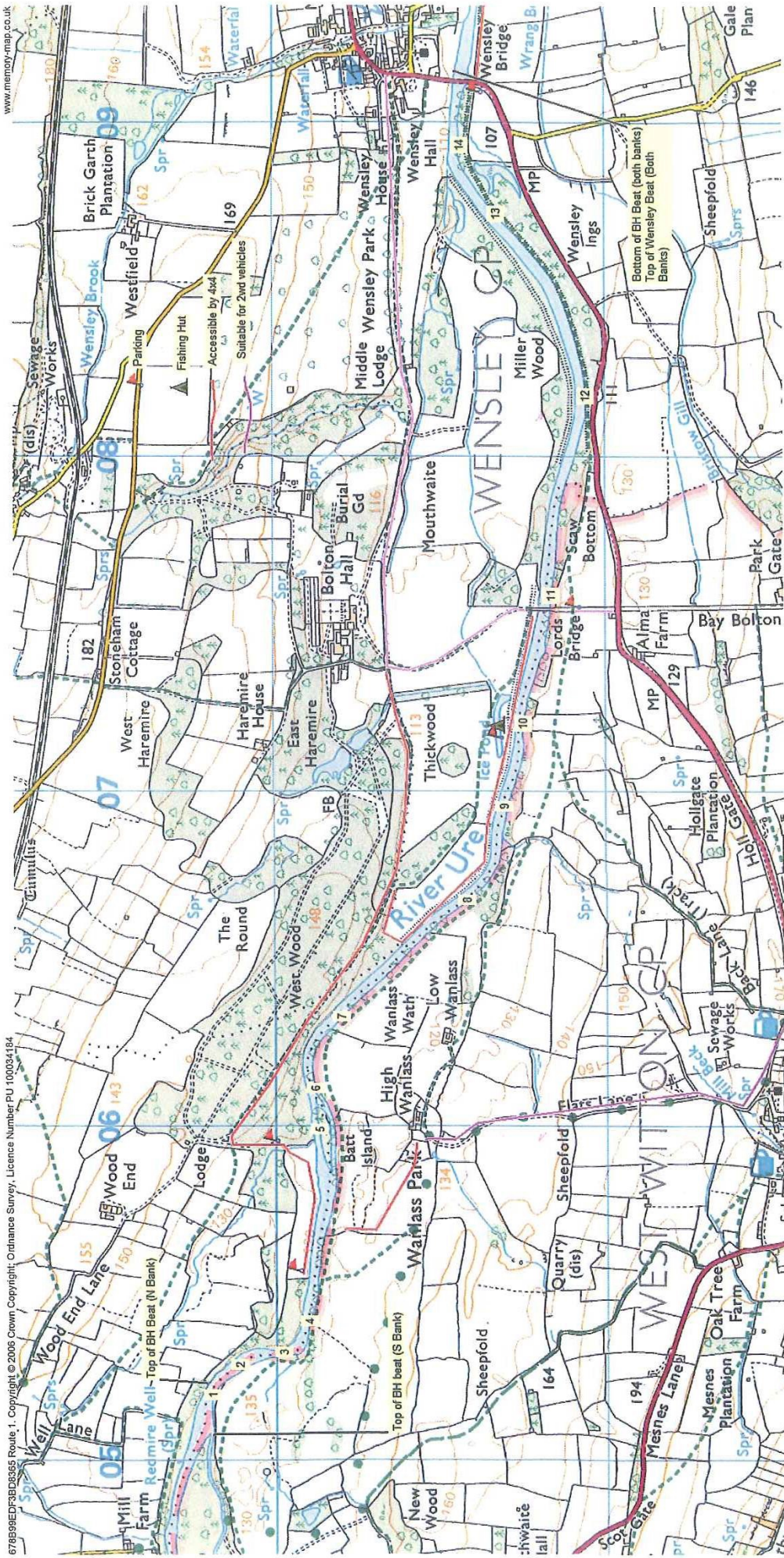
Thoresby Beat Pools

Key:

- 1. The Stripe
- 2. Froddle Dub
- 3. Flesh Dub
- 4. Upper Stepping Stones
- 5. Lower Stepping Stones

- 6. Long Stream
- 7. Spence Dub
- 8. Deep Nick Dub
- 9. Upper Dick Dub
- 10. Lower Dick Dub

- 11. The Arks
- 12. The Annex
- 13. Black Dub



Bolton Hall (BH) Beat Pools

Key:

- | | | |
|------------------------|-------------------|------------------------|
| 1. The Boundary Pool | 6. West Wood Dub | 11. Lord's Bridge Pool |
| 2. Upper Monkey Bridge | 7. 3 x short runs | 12. Freddie's Pool |
| 3. The Corner Pool | 8. Licbus Dub | 13. Banking Dub |
| 4. Beild's Dub | 9. Chub Stream | 14. Wensley House Pool |
| 5. Batt Island Run | 10. Thickwood | |

BOLTON ESTATE FISHING INFORMATION FOR GUESTS: THORESBY BEAT.

Getting Here

Follow the A684 south westerly direction from Leyburn into Wensley. When you get into the village, take the first right towards Carperby & Redmire (also brown signed for Bolton Castle). Follow the road through Redmire towards Carperby. You can turn left by the sign for 'Low Thoresby Only' and use the attached map, which will take you to the bottom of the beat. If you chose to do this, please text the tenant farmers, Mr & Mrs Richard Weatherald, on 07970 524487 stating your vehicle make, registration and expected time of departure. I recommend entry via the top of the beat though, as follows. Pass the right turn to Bolton Castle and continue towards Carperby, past farm on left, up S bend and past another driveway (with two entry/exits) and carry on past next bend. You will then see another driveway on left. Turn left here and follow the hard track for approximately 500m to the farmstead. If you get to the bridge over the disused railway line, you have gone too far. If travelling by 2wd, you will have to leave your car and walk from here (about 5-600m). If using a 4x4 you can continue to the riverbank. Turn left immediately after the derelict barn and through a gateway. The track then veers right and passes in from of the High Thoresby farmhouse (postcode DL8 4DP) and cottage on right with chicken runs on your left. Through next gateway in fallen down wall and track veers left through a gateway with a wooden five bar gate. Drive through this gate and across the field on the stone track and through next gate. After this gate, the track takes you along the left edge of the field, where there are deep ruts. If your vehicle is reasonably high, please follow the ruts, which we will fill with hardcore in the future. If you are concerned about the depth of ruts you can drive up the centre of the field, as long as it is reasonably dry. The next gate is in the top left corner of this field, after which you should go half right (following the prominent wheelings) and downhill through the final gate (which has a small stone field barn adjacent to it, which houses the loo). At the bottom of this field you will see the river and confluence with Bishopdale Beck towards the upstream limit and the hut at near to the bottom of the field. From here the map should be self explanatory. Please be extremely careful to leave all gates as you find them, especially as the beat crosses two farm boundaries.

Local Area

There are a lot of beautiful walks and several tourist attractions which can be visited if fishing conditions are poor or if you are accompanied by non fishing guests. Bolton Castle, postcode DL8 4ET, is the historic family home on the estate which is open to the public and contains a tea room and gift shop. Daily activities include archery, falconry, hawk and owl displays and a wild boar park. Private 'Hawk Walks' and a 'Falconer For The Day' experience can also be booked.

The market town of Leyburn includes several pubs, an excellent fishing tackle shop called Gilsan Sports (www.gilsansports.com), a country clothing outfitters called Wilfords (www.wilfordsofleyburn.com), and a superb family owned supermarket called Campbell's (www.campbellsofleyburn.co.uk), which will supply all the ingredients for a luxury picnic.

Facilities

The fishing hut is situated at the top of Froddle Dub. The code for the combination lock is 1399 and please ensure that it is secured at the end of your day. If you would like a picnic lunch and/or drinks please let us know, these can be supplied with prior notice.

Medical Facilities

The hut contains a basic first aid kit, however it is very unlikely that an estate first aider will be on hand. Please report use of any first aid kit to the estate office, along with any accidents or near misses (office@boltonestate.co.uk).

The closest medical centre is Aysgarth, postcode DL8 3AA and telephone number 01969 663222. There is also one at Leyburn, postcode DL8 5EP and telephone number 01969 622391.

In any emergency please call 999 and the grid reference for the centre of the field in which hut is sited is SE 0288 8947.

Wading

I recommend people not to wade unless absolutely necessary, for stealth in low water and safety in high water conditions. When doing so though, anglers should use a wading stick and wear life jackets, which are not provided by the estate. The river bottom is not unduly hazardous but a range of gravel and boulder sizes will be encountered, which can be slippery.

Guide/Ghillie

Brian Towers is the estate's recommended guide. He operates on a freelance basis and should be booked direct by the angler on 07850 727132. As well as being an Association of Advanced Professional Game Angling Instructor (double and single handed), he knows the water extremely well and we would recommend him especially strongly on your first visit. He has a 4x4 which he is happy to use for transport around the beat.

Food & Accommodation

The Three Horseshoes, Wensley (www.thethreehorseshoeswensley.co.uk) is very local, serving fine ales and an extensive food menu.

The Bolton Arms, Redmire (www.boltonarmsredmire.co.uk) . Less than five minutes from the beat, traditional pub, with warm welcome, serving excellent beer, great home cooked food and also has rooms.

Yorebridge House Hotel, Bainbridge (www.yorebridgehouse.co.uk). Very high end boutique hotel, locally tipped to be in the running for a Michelin Star. Approx 20 minutes drive from beat.

The Wensleydale Heifer, West Witton (www.wensleydaleheifer.co.uk). Gastro pub serving fantastic sea food and steaks, with themed rooms. Less than 10 minute drive from beat.

The Blue Lion, East Witton (www.thebluelion.co.uk). Traditional sporting pub, serving excellent food and has rooms. Approx 20 minutes from beat.

We have a 5m bell tent which will sleep up to six, if you would like to try 'glamping' on the riverbank. Prices from £40 per head for first night, reducing to £20 for subsequent nights. Camp beds, sun shower and additional facilities are available by arrangement. Please contact tom@boltoncastle.co.uk, for further information.

The Ure Salmon Trust

This not for profit company has been set up to assist the recovery of salmon in The Ure and the promotion of the salmon fishing industry, creating jobs and income for the area. More details of its activities can be found at www.uresalmon.org.uk and we ask everyone who fishes at Bolton to become a member.

RULES FOR FISHING ON THE BOLTON ESTATE

- The Salmon fishing season runs from 6th April until 31st October and trout from 22nd March to 31st October.
- Those fishing must have purchased either a valid day permit or a syndicate season ticket.
- All anglers must be in possession of a valid EA Fishing Licence.
- All Salmon and Sea Trout must be returned to the river, as quickly and efficiently as possible. De-hook the fish as quickly as possible, keeping it in the water throughout. If taking a photograph, the angler should remain in the water and remove the fish for as short a time as possible.
- All catches must be reported to the Estate Office tel 01969 621182 or email tom@boltoncastle.co.uk.
- Spinning is permitted if the river height is over 1m 40 cm at the start of the day. The EA Kilgram measuring station should be used for reference (<http://www.environment-agency.gov.uk/homeandleisure/floods/riverlevels/120701.aspx?stationId=8113>). Anglers should revert to fly if conditions allow during the day.
- Dogs must not be loose on the river bank under any circumstances. They may be walked on leads or under very strictly under control, while an individual is not fishing.
- Anglers are permitted access to the river bank at the points shown on the issued map. Where cars are permitted along the river bank, they must keep to the recognised tracks and must be parked so as not to hinder access through gates by Estate tenants. All gates must be left as found at all times. For the safety of your vehicles, please do not park them in fields containing cattle and monitor regularly in case cattle are let onto fields during your visit.
- Anglers are requested to act in a gentlemanly manner and move down the river in an orderly fashion to allow access to other members from either bank. At least one step should be taken downstream between each cast.
- All anglers are authorised to ask any person fishing the water to show his/her fishing licence, and report any infringement of the rules to the Estate Office.
- Infringement of the rules may entail forfeiture of the right to fish and Bolton Estate reserves the right to withdraw permission to fish at any time.
- The Estate Office, Bolton Hall or the Managing Agents reserve the right to alter or change the rules at any time, where, in their opinion, circumstances require it.
- Anglers who fish on the Bolton Estate, do so wholly at their own risk. The Bolton Estate, its agents and staff accept no liability for death or personal injury howsoever caused.
- Security of anglers' vehicles and personal effects are wholly the responsibility of the ticket holder.

It is recommended that anglers fish in chest waders, carry a wading stick and wear a buoyancy aid. It is not always possible to wade across the river and it is the responsibility of all anglers to be responsible for their own safety